



STOREY LAKE

Where your story unfolds.

LENNARORLANDO.COM



ORLANDO BRAZIL
INVESTMENTS



MIAMI BRAZIL
INVESTMENTS

Ricardo Oliveira
Broker/Owner



+1(561)479-9047

 mbi-usa.com

 info@mbi-usa.com

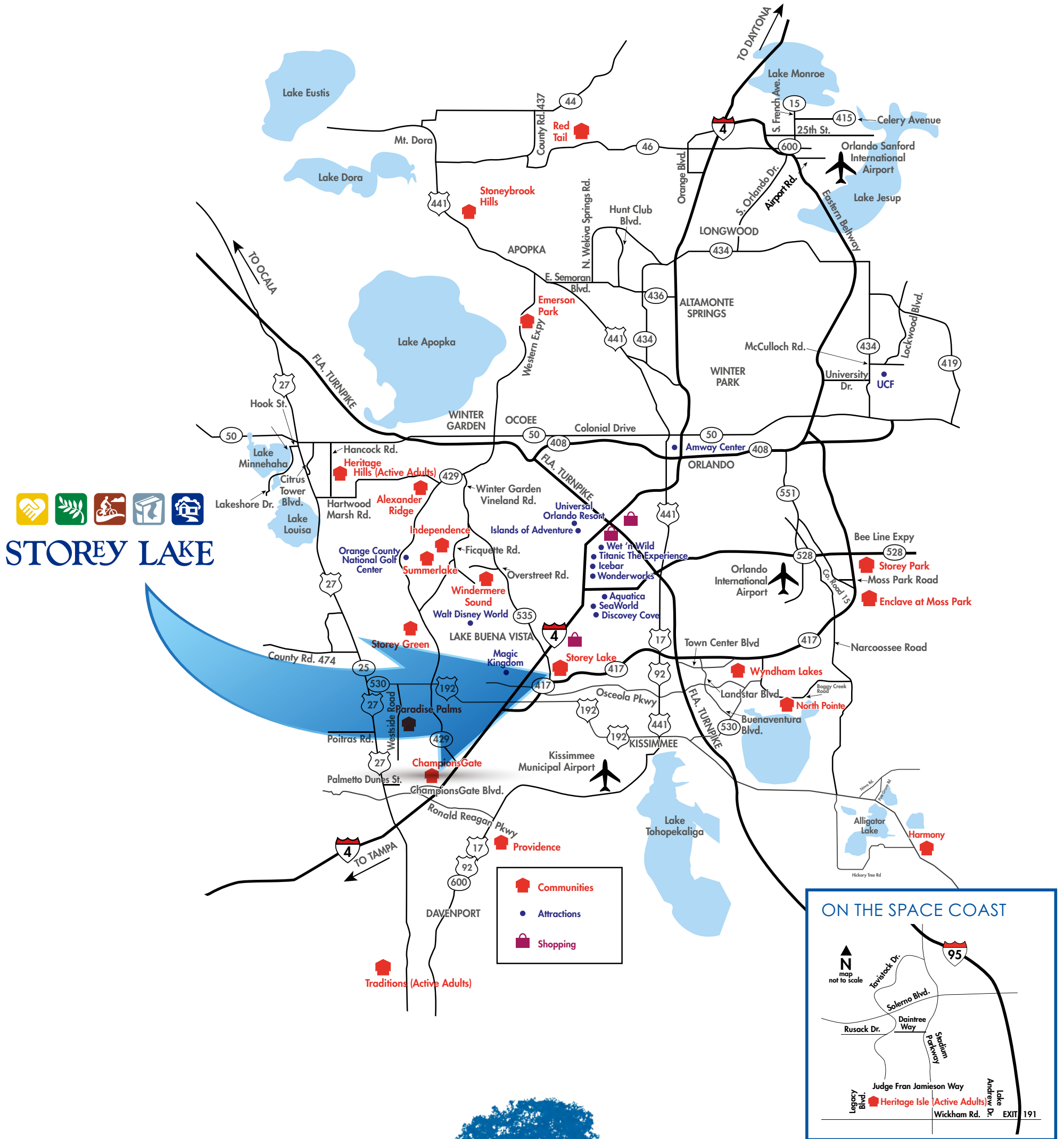
 /obiusa

 /mbiusa

 @obi_usa

 @Mbiusa

Orlando Communities & Attractions



STOREY LAKE STORY

WELCOME TO AN IMAGINATIVE
AND CONTEMPORARY COMMUNITY
IMMERSED IN THE BEAUTY OF NATURE.

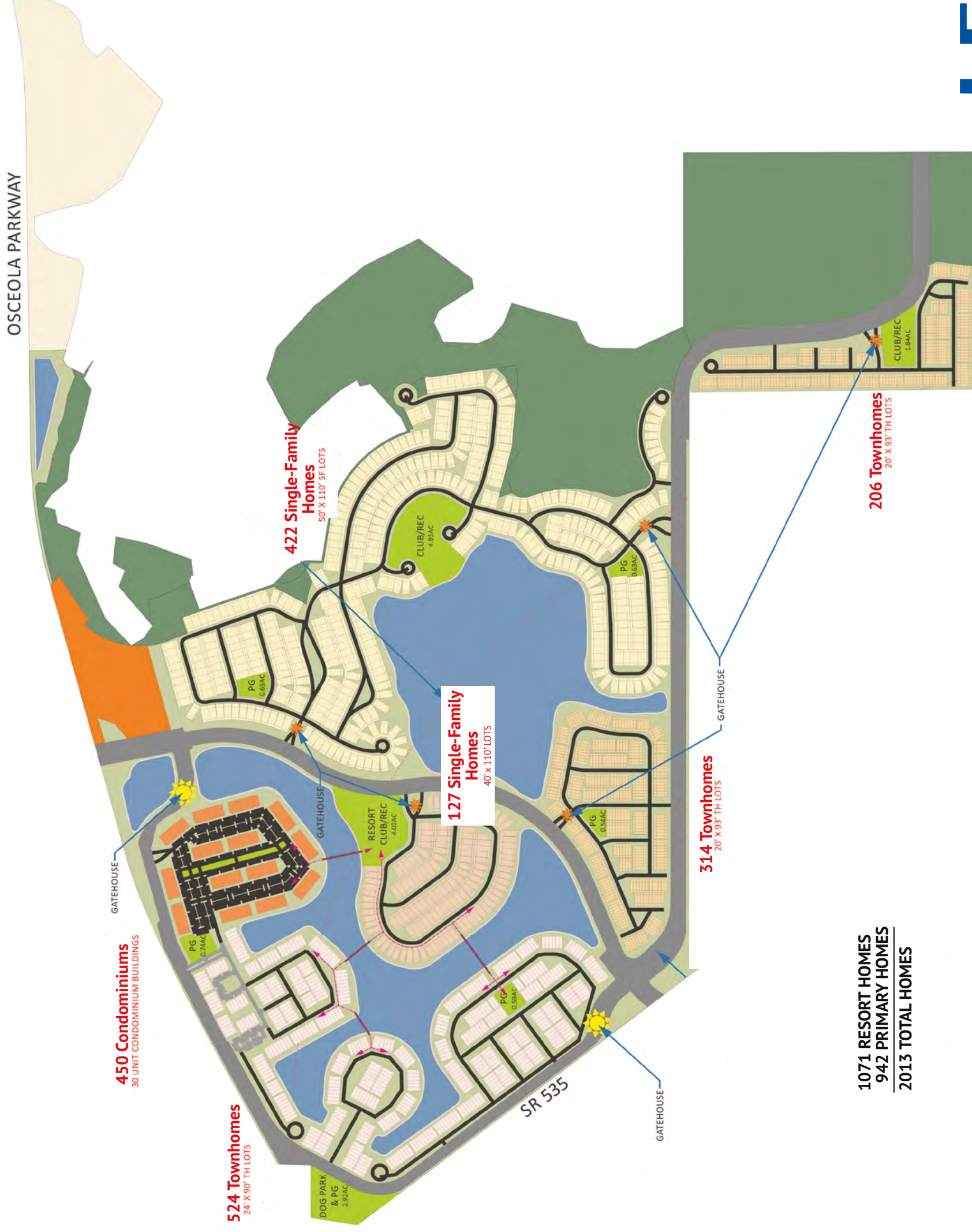
Storey Lake, developed by Lennar Homes, creates an unforgettable setting for the story of your life to unfold. Our philosophy is built on five pillars: Community, Nature, Health, Story and Homes.

The values behind these pillars inspired a memorable collection of lifestyle experiences and amenities that create engaging places and rituals for storytelling and story making throughout the community.

Life is a story... live yours at Storey Lake.



COMMUNITY MAP



LENNAR

ORAL REPRESENTATIONS CANNOT BE RELIED UPON AS CORRECTLY STATING REPRESENTATIONS OF THE DEVELOPER. FOR CORRECT REPRESENTATIONS, MAKE REFERENCE TO THE PURCHASE AGREEMENT AND TO THE DOCUMENTS REQUIRED BY SECTION 718.503, FLORIDA STATUTES, TO BE FURNISHED BY A DEVELOPER TO A BUYER OR LESSEE. Site plans and community maps are conceptual in nature and are merely an artist's rendition. These maps are solely for illustrative purposes and should never be relied upon. The past, present, future or proposed roads, easements, land uses, conditions, plat maps, lot sizes or layouts, drainage, utilities, drainage, land conditions, or development of any type whatsoever, or whether reflected on the site plan or map, or whether outside the boundaries of the site plan or map, may not be shown or may be incomplete or inaccurate. The present, future or proposed roads, easements, land uses, conditions, plat maps, lot sizes or layouts, zoning drainage, land conditions, or development of any type may or may not change in the future. It is not uncommon that any of the foregoing can change without notice to you. You should never rely on the accuracy of this map in making any decisions relative to purchasing any property. We reserve the right to make changes at any time without notice. See a New Home Consultant for details. Copyright © 2014 Lennar Corporation. Lennar, the Lennar logo, Everything is included logo are registered service marks or service marks of Lennar Corporation and/or its subsidiaries. CCG-1518166 - 9/14

STOREY LAKE

RESORT CLUB/BEACH GARDEN SCHEMATIC SITE PLAN - TWO

- BEACH**
- SUN BATHING
 - TROPIC WALK
 - CANOE/KAYAK RENTAL
 - BEACH SHOWERS
 - CHICKEE HUTS
 - HAMMOCKS

AMENITY SIZES

- POOL - 11,450 SF
- SPLASH PAD - 770 SF
- DECK - 23,260 SF
- BEACH - 19,970 SF
- PARKING - 79 SP.
- EVENT LAWN - 4000 SF (50'X70' TENT/ 1/2-250 P. CAP)



POOL

- KID ZONE W/ BEACH ENTRY, SLIDE & SPLASH PAD
- LAZY RIVER W/ PRIVATE COVES
- ADULT ZONE

CLUB

- FITNESS CLUB
- RESTROOMS W/ MINI SPA
- ADMIN
- BUS. CENTER
- KITCHEN
- TIKI BAR

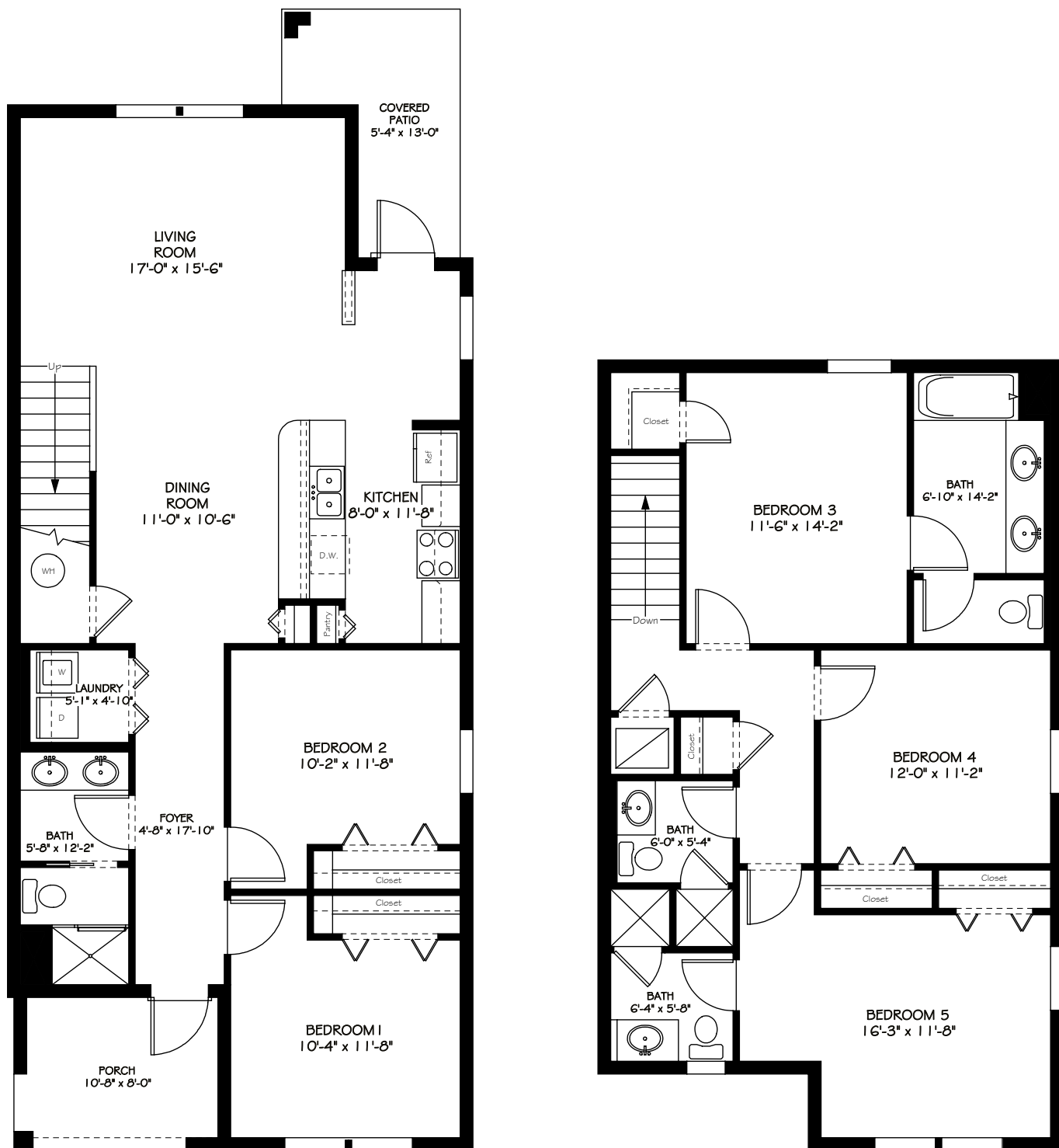
GATED ENTRY
CARD ACCESS ONLY

ORAL REPRESENTATIONS CANNOT BE RELIED UPON AS CORRECTLY STATING REPRESENTATIONS OF THE DEVELOPER. FOR CORRECT REPRESENTATIONS, MAKE REFERENCE TO THE PURCHASE AGREEMENT AND TO THE DOCUMENTS REQUIRED BY SECTION 718.503, FLORIDA STATUTES. TO BE FURNISHED BY A DEVELOPER TO A BUYER OR LESSEE. Site plans and community maps are conceptual in nature and are merely an artist's rendition. These maps are solely for illustrative purposes and should never be relied upon. The past, present, future or proposed roads, easements, land uses, conditions, plat maps, lot sizes or layouts, drainage, land conditions, or development of any type whatsoever, or whether reflected on the site plan or map, or whether outside the boundaries of the site plan or map, may not be shown or may be incomplete or inaccurate. The present, future or proposed roads, easements, land uses, conditions, plat maps, lot sizes or layouts, zoning drainage, land conditions, or development of any type may or may not change in the future. It is not uncommon that any of the foregoing can change without notice to you. You should never rely on the accuracy of this map in making any decisions relative to purchasing any property. We reserve the right to make changes at any time without notice. See a New Home Consultant for details. Copyright © 2014 Lennar Corporation. Lennar, the Lennar logo, are registered service marks or service marks of Lennar Corporation and/or its subsidiaries. CGC-1518186. 9/14



ROYALE PALM

5 BEDROOM / 4 BATH / 1 CAR GARAGE / 2,128 SQUARE FEET

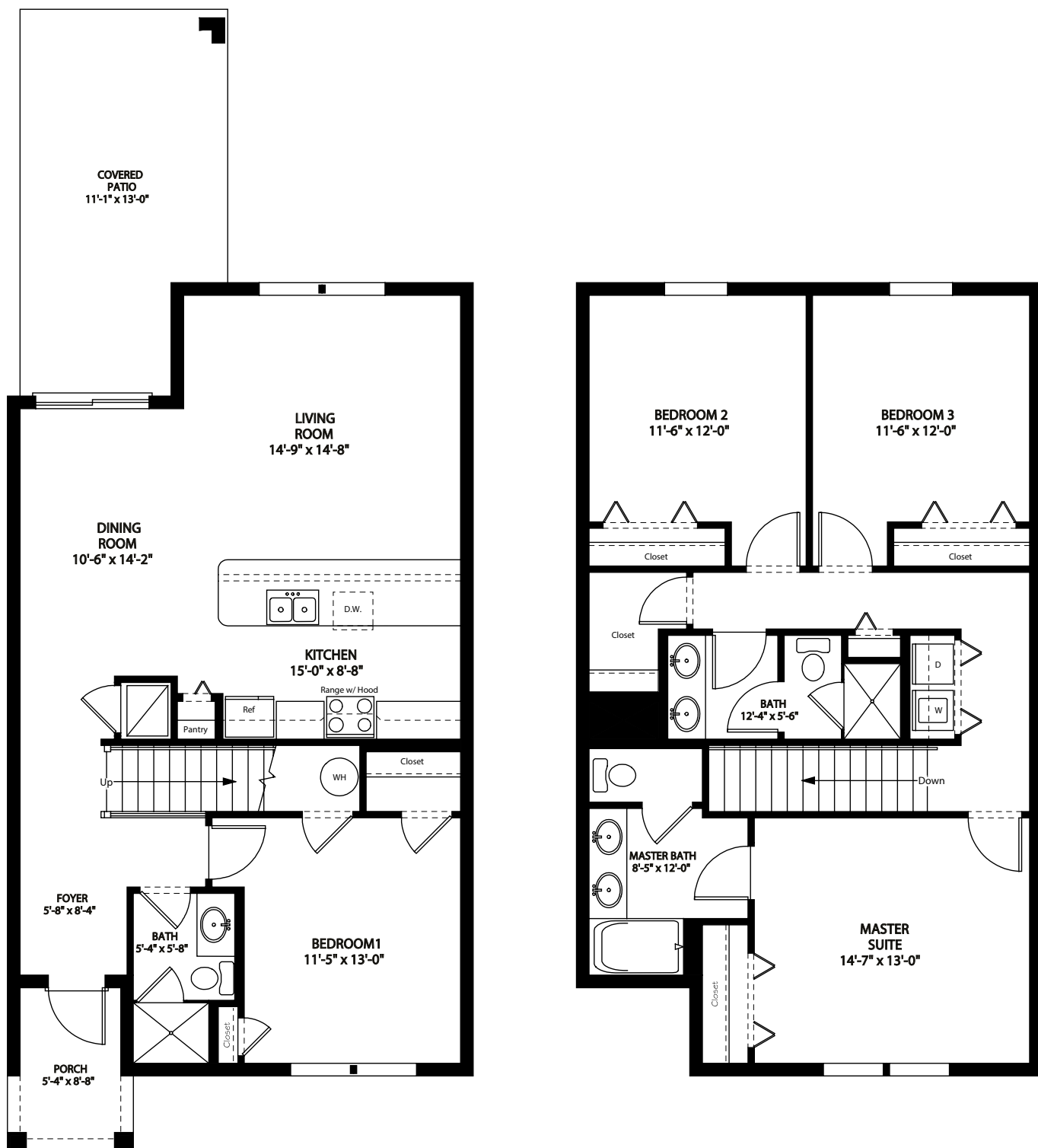


LENNARORLANDO.COM



BEACH PALM

4 BEDROOM / 3 BATH / 1 CAR GARAGE / 1,914 SQUARE FEET

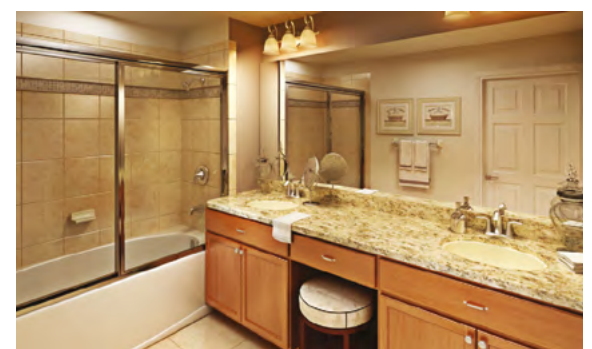


LENNARORLANDO.COM



SABAL PALM

4 BEDROOM / 3 BATH / 1 CAR GARAGE / 1,914 SQUARE FEET



LENNARORLANDO.COM



Ricardo Oliveira
Broker/Owner

 +1(561)479-9047

 mbi-usa.com

 info@mbi-usa.com

 /obiusa

 /mbiusa

 @obi_usa

 @Mbiusa

START YOUR STORY

PREVIEW CENTER:
8320 CHAMPIONSGATE BOULEVARD
CHAMPIONSGATE, FL 33896
407.949.0023

COMMUNITY LOCATION:
S.E. CORNER OF OSCEOLA PARKWAY AND SR 535
KISSIMMEE, FL



LENNAR[®]ORLANDO.COM